

## THE FORTY NINER

VOL. 1

U.S.S. ORMSBY (APA 49) JUNE 1945

NO. 1

### CAPT SMITH RELIEVED BY CAPT TRUITT —

#### 7TH WAR LOAN

From behind my desk I have become better acquainted with many of you. Since Lt. Cdr., Alcott left to assume command of the U. S. S. Naos your problems have been mine to help you with. Many of them have been personal and some have been financial. With that in mind I want to call to everyone's attention the 7th War Loan campaign now underway.

Some ships of the fleet have established excellent records for a series of these War Loan campaigns. It is the result of complete participation by officers and men alike who know that the money they are lending to the government will be repaid with interest when the bond matures. The longer you keep

(Contd. Page 6 Col. 1)

Captain Russell S. Smith will soon be detached from the U.S.S. Ormsby to assume new duties. This is our loss. Upon being interviewed Captain Smith expressed his sincere appreciation for the excellent efforts rendered by all hands while serving under his command and stated: "It has been a pleasure to work with all hands and I would like nothing better than to stay with the crew until the end of the war."

The officers and crew of the "Mighty O" extend to Captain Smith success in his new assignment, and at the same time, wish to welcome aboard Captain I. W. Truitt, until recently the Commanding Officer, U.S.S. Dauntless. Captain Truitt, when approached said he was not prepared to make a statement at this time.



"THE FORTY NINER"  
(formerly "High-Tide")

A monthly newspaper published at no expense to the Government for the Personnel attached to and serving on board the U.S.S. Ormsby (APA-49).

Commanding Officer  
RUSSELL S. SMITH, Captain, USN.

Executive Officer  
Lt. Comdr. E. B. NICKEL, (D),  
USNR.

Chaplain  
Lt. W. L. LANGLEY, (SEC), USNR.  
\*\*\*\*

John R. Remark, Editor  
Lawrence G. Kessner, Managing  
Editor

John R. Schauble, Art Editor  
CONSULTING STAFF

F. E. Deuten G. B. Yackoren

R. C. Black W. G. Anderson

W. E. Zasharoff J. M. Cook

PUBLISHERS

O. C. McClanahan W. E. Dennis  
G. C. Croffoot

\*\*\*\*\*

The FORTY NINER receives Camp Newspaper Service material. Reproduction of credited matter prohibited without permission of CNS, 205 E 42nd St.

\*\*\*\*

Paper may be mailed home via regular mail only.

# MAKE THIS YOURS

With the growth and expansion of this ship, comes our newest "baby", The Forty Niner.

As our ship's number is "49", we thought it would behoove us to wear the name "Forty Niner" as a laurel and bestow it upon our new ship's paper. If there are any conscientious objectors we will be glad to meet them at dawn with seconds!

This is intended to be your paper and its only purpose is to benefit you by passing along information on the things you want to know, trying to give you a chuckle here and there, and providing a place for you to air your "beefs" and make known your wants.

The Forty Niner will come out every month and if you want to buy a car, sell your car, get a washing machine, just let us know by the 5th of the month and a "classified ad" will be fixed up. Contributions of any sort--artistic, aesthetic, or informative--will always be welcomed.

Remember, Swabbies, any paper can be only what its readers make it, so if you like the "Forty Niner" and want it to continue,

MAKE US KNOW IT!

The Editor.



## SEE THE PADRE

One of the unshakeable and unchanging facts of life is that wherever we go God is. Most of us would agree that we already know that, but our knowledge is a kind of dim and shadowy thing that we can't pin down. We don't think much about it but we guess it's true, all right, that God is everywhere.

It has been reported that the favorite Scripture passage among the people in the countries that were overrun by the Nazis is the one from the Psalms, "If I ~~make~~ my bed in hell, behold, Thou art there." Now, this is an easy saying for those who have never gone through hell; it's a hard and a blessed saying for those who have.

To know that we will not be alone ~~not~~ even in the toughest spot into which life can throw us, is a source of courage and strength. Moreover, the knowledge that we cannot escape the demands of our Universal Companion keeps us on our toes. Our God, into whatever place we may go is with us, for a blessing and a challenge.

\* \* \* \* \*

It is requested that all wandering mess gear be returned to the mess hall.

\* \* \* \* \*

## NICKEL-EXEC

Lt. Commander E. B. Nickel became Executive Officer of the Ormsby, April 25, 1945. He takes over his new duties thoroughly versed in the workings of the ship in all its many intricate details, having previously served as its First Div. Officer, Operations Officer, Cargo Officer, and First Lieutenant.

Enlistment date in the Navy for Commander Nickel was May of 1931, when he reported to Northwestern University for the Naval Reserve Officer's Training Corps. He was commissioned as Ensign in the Naval Reserve, 18 May 1935, and in October 1944 was advanced to his present grade.

Prior to the war Commander Nickel attended Northwestern University where he received his Bachelor degree of Science. He attended the Chicago-Kent College receiving his L.L.B. and was admitted to the Illinois Bar.

Before reporting aboard the Ormsby for duty he was assigned to the U.S.S. Tarazed as Gunnery Officer, operating in the North Atlantic and Caribbean.

Mr. Nickel is married, residing in Skokie, Ill. His brother, also a Lt. Cdr., is stationed  
(Contd. Page 4 Col. 1)

\* \* \* \* \*

\* \* \* \* \*



## NICKEL-EXEC

(Contd. From Page 3)

aboard the U.S.S. Wake Island as Gunnery Officer, and his sister, a wave Lt.(jg), is stationed in Boston, Mass.

Asked about his job of being Executive Officer, Comdr. Nickel stated that: "I want everyone to know that he can come into my office, and talk over any matters: naval, personal, marital or business, which are confronting him at the time. I will try to give him the best kind of advice that I possibly can. I want every one to know that the office is there to serve the entire ship's company to the best of our ability."

The Forty Niner is sure it expresses the sentiments of officers and men of the Ornsby in saying WELCOME AS OUR EXEC Comdr. Nickel, and best wishes always. All hands are behind you 100%.

\* \* \*

There was a young lady in bloom,

Her life had been so fantastic;

She dashed to the ladies rest room;

You can't trust war-time elastic.

\* \* \*

## ALCOTT TO COMMAND NAOS

In accordance with the ancient adage "hard work will not pass unrewarded," Lt. Cdr., Alcott, our former Executive Officer, was transferred and promoted from his position on the Ornsby to Commanding Officer of the Naos, AK-105.

Commander Alcott was assigned to the Mighty "B" with the rank of Lt. before her commissioning, and held the various positions of Boat Officer, Cargo Officer, Boat Group Commander, and First Lieutenant. In July of 1944 he was appointed Executive Officer to replace Commander McCormick who was promoted to Commanding Officer of the Libra, AKA 12. As Exec he has helped to keep her running in a smooth and shipshape condition through many delicate situations. April 21, 1945 his orders were received and he debarked from the Ornsby to proceed by air to his new assignment.

Congratulations, good luck, and good hunting, "Skipper" Alcott.

Music lovers are urged to listen for the record session over the mess hall radio outlets between the hours of 11:45--12:15, and 16:45--17:15.





Harry S. Truman

Harry S. Truman, 33rd President of the United States, was born in Lamar, Missouri, on May 8, 1884, son of a farmer. An artillery captain in World War I, he fought in St. Mihiel and the Argonne. After serving as county judge, he was elected to the Senate in 1934. He is the first Missourian ever to become a Chief Executive, the seventh vice president to be elevated because of a death in the White House. He will serve without a vice president.

\* \* \* \* \*

## THY PROPHECY

As it came to pass that the division officer cast his gaze toward the sun and perceiving that it was bright and gaveth forth much heat, he spoketh unto his followers saying, "Verily the rays of the sun canst doeth thee much good, but likewise they canst doeth thee much harm. Take heed, therefore, lest thou becomest burnt and in misery and thine shekels withheld from thee!"

Now that very hour a seaman spoke unto another, "Our division officer knows not of what he speaketh. Behold, I am as lily, but today I shall become as Tarzan who dwelleth among the apes. Come thou, and we shall cast aside our garments in the light of this day."

"Nay", Spake the second, "I cannot join thee and thou knowest full well that thy way to become as Tarzan is not the way of the wise."

And on that part of the vessel where worketh the men of signals, lay this seaman until night two full hours had passed and his skin became like unto a beet.

Then came the eleventh hour, and lo, wherein the sick are healed, lay a sunburned seaman and he was sorely afflicted. And when this seaman's troubles were multiplied many fold by the keep-

(Contd. Page 9 Col. 1)



## 7TH WAR LOAN -

(Continued from Page 1)

your bonds the more they are worth. To everyone who participates will be the knowledge that he is doing his part to bring the war to a speedier end.

We want to have each officer and man in the ship's company buy at least one \$18.75 bond. When the bond matures it will be worth \$25.00. Some of you have monthly allotments for the purchase of bonds but this campaign aboard ship is separate from them. If you wish to purchase more than one \$25 bond for \$18.75 you may do so.

Ensign Hallstrom, who will receive your money for a war bond purchase, will post outside the supply office a summary by divisions showing their respective participation on a percentage basis. If there are 15 men in a division and that division purchases 15, \$18.75 bonds it will have a 100% participation.

Ensign Hallstrom will be available at any time in the Supply Office to receive your money for a bond. At the last pay call, Captain Smith started the ball rolling with the purchase of his bond. I think I can find \$18.75 that is still left from my last liberty, too.

E. B. NICKEL.

## GUAM

The Island of Guam, the largest of the Marianas, was ceded to the United States by Spain by Article Two of the Treaty of Paris (Dec. 10, 1898). It lies between latitudes 13°13' and 13°39' north and longitudes 144°37' and 144°58' east. It is 30 miles long and four to eight and one-half miles wide with an area of 206 square miles and a population of (1940) 22,290. Distance from Manila, 1,506 miles, from San Francisco, 5,053 miles. The inhabitants call themselves Chamorros, but the present generation is a mixed race, with the Malay strain predominating. Guam is under the Navy Department, as a naval station with a powerful government radio station. The port of entry is Apra. The capital is Agaña.

Japanese forces occupied Guam. (Dec. 10, 1941) The island was proclaimed (July 27, 1944) as again under the rule of the United States.

Exports include copra and coconut oil. Other products are corn, rice, sweet potatoes, coffee, bananas, pineapples, citrus fruits, limes, sugar cane, timber etc. The 4300 head of cattle include 1,432 water buffaloes.

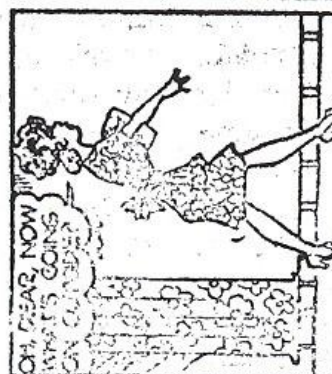
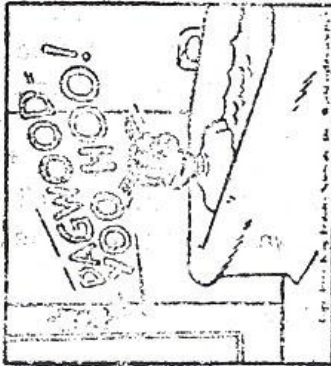
- World Almanac - 1945



BLONDIE

courtesy King Features Syndicate, Inc., distributed by CNS

by CHIC YOUNG



MALE CALL

by Milton Caniff

PERMANENT PARTY WITH TEMPORARY ADVANTAGE



Copyright, 1947 by Milton Caniff, distributed by King Features Syndicate



## REFLECTIONS OF FLOTTA ATOLL

Flotta is one of the Orkney Islands which lie across the Pentland Firth to the North of Scotland. The great British Naval anchorage of Scapa Flow takes in the greater number of these islands. It was here the Germans scuttled their Grand Fleet after its surrender in 1918. During World War II, Scapa Flow has been used mainly as a base to protect shipping to Murmansk, Russia. It was from here that the first American task force operated in European waters as a unit of the British Home Fleet, early after our entry into World War II. It was during this period that Reflections of Flotta was first conceived.

Picture if you can, an Island, small,  
Perhaps a few miles 'round,  
If by the road you're bound.  
Its shape is somewhat like a figure eight,  
With two small, tiny coves  
That almost cut the isle in two—  
Up slightly on the northern half.  
Low, rolling hills, and many vales and dales,  
Make up the landscape of this dreamy bit of land—  
Once thrust from out the sea.  
The knolls, the hillocks, and the valleys  
Are covered with a verdent swarth—  
Green with fields of winter grain, and heather.  
Simple, low, moss covered huts,  
Some roofed with thatch, some stone,  
The mansions of centuries past—  
Are the odd and picturesque abodes  
Of man, who, in this day of modernity,  
Still lives in an old and slow moving world.  
These huts may be seen, both far and near,  
Like polkadots upon the green,  
Lending a peace to the eye of the rover.  
Blending with thoughts of home.  
Then as the vision moves onward,  
A span of oxen hoves in view,  
Tugging in lumbering laziness  
A wooden plow of ancient vintago

(Contd. Page 11)



## THE PROPHECY

(Contd. From Page 5)

er of the shekels, the learned man of healing sayeth unto him, "Wishest thou yet to be as Tarzan or wouldst thou be as Sinatra who skin hast little or no color?"

And the seaman lay in his cry and he consigneth his shipmates, Tarzan, Sinatra, and the sun to the realm of the devil.

And it was night.

## TOMORROW'S WORLD

Has life given us a bad deal? The answer is not a simple "yes" or "no". All men have failed in recent years to give enough time to building a world of good will.

Whatever requirements are laid upon us now, we can always know that a better way and a brighter day will come. We all have the seeds of a brighter world buried deep within us, and no matter what happens, the seeds of this brighter world will germinate. We all know that all the darkness in all the world can not put out the flames of one small candle.

## THE WOLF

by Sansone



"Step to the rear, please... plenty of room in back!"

\*\*\*\*\*  
N-A-V-Y A-B-C's

A Navy friend of mine tells me that service men with characteristic shrewdness, have reduced the maze of Navy rules and regulations to three simple formulas:

1. If it moves, salute it.
2. If it doesn't move pick it up
3. If it's too big to pick up, - PAINT IT ;

\*\*\*\*\*



## WHAT'S YOUR NAVAL I.Q.?

1. How can you distinguish a Navy captain's cap from a Navy commander's cap.
2. A new commanding officer ordered a BM2c to pipe a certain call aboard ship. What reason did the officer have for believing the man could pipe the call?
3. If you know the colors of the Presidential Unit Citation ribbon, how can you recognize the Presidential Unit Citation burgee pennant?
4. A sailor thought "four bells and a jingle" meant fifteen minutes after the hours of 0200, 0600, 1000, 1400, 1800 and 2200. How far wrong was he?
5. The yeoman told his stricker in his office to go get a package from the halfdeck. The striker made his way to the partial deck below the lowest complete deck on the ship. Did he get it?
6. "Chesapeake Bay" is a possible name for what class or classes of U.S. Navy Ships?
7. In bending a heaving line to a hawser, which is preferred: (a) clove hitch, (b) timber hitch, or (c) rolling hitch?
8. What officer is responsible for the daily winding of the ship's chronometers?
9. What are the "Rules of the Road?"
10. What differentiates a light cruiser from a heavy cruiser?

(Answers on Page 12)

\* \* \* \* \*

Concerned about her husband who had entered the Navy, the young wife sent a note to the pastor of her church one Sunday morning. It was handed to him just as he was mounting the pulpit. The note read, "John A. Anderson having gone to sea, his wife desires the prayers of the congregation for his safety." But the minister glancing it over hastily, read aloud: "John Anderson, having gone to see this wife, desires the prayers of the congregation for his safety."

\* \* \* \* \*

A dilapidated car wheezed up to the toll gate of the George Washington Bridge in New York City. Its last drop of gas was gone, and its worn-out tires were almost flapping in the breeze.

"Fifty cents", said the bridge attendant briskly.

"Sold!" exclaimed the driver, leaping out of the car and holding out his hand.

\* \* \* \* \*





If it becomes a toss up whether to wash your face or your feet, wash your feet. They're the most important equipment you've got. Take care of them.

An American infantryman in the thick of battle happened to spy two paratroppers, wearing American uniforms, landing behind Allied lines. Suspicious, he threw some fake baseball questions at them; "How many homers did Jim Londer hit for the Dodgers? How was Connie Mack doing as a pitcher for the A's this year?" They told him they hadn't heard the latest sports news over the short wave. Result: Two more Nazis in a prison camp.

(Contd. From Page 8.)

Followed by a rustic native of the soil.  
An idle cart, with solid wooden wheels  
Bound in a rim of iron  
Forged in the shop of the village smith,  
Seems waiting beside the road  
To take one's fancy for a flight,  
Into a dreamy past.  
In the valley,  
South of the eastern cove,  
Lies a once white chapel—  
Gravestones clustered about it.  
'Tis there alone, weatherbeaten, solemn, and quiet;  
Set there apart;  
A monument of majestic stateliness.  
One cannot help wondering  
What legends, rare, might be unfolded,  
Should all the lips  
Now sealed and resting 'neath its shade  
Be suddenly unsealed.  
A balmy breeze blows in from the south  
To fill the air with a fragrant, salty tang;  
And patches of violets, daisies, and buttercups,  
Announce to the world, "Spring is here."

J. I. Stanley.



(Answers to Quiz on Page 10)

\*\*\*\*\*

1. You can't, as caps for the two ranks are identical. Their caps are embroidered along the front edge of the visor. Caps of flag officers and officers of equivalent rank in the staff corps may be distinguished from caps of captains and commanders, however. Their visors are embroidered in full.
2. The fact that a coxswain, striking for BM2c, must, as one of the practical factors of his qualifications, demonstrate his ability to pipe all shipboard calls.
3. Because it has the same colors blue, gold, scarlet.

\*\*\*\*\*

She: My mother told me to say "NO" to everything.

GI: Well, do you mind if I hold your hand?

She: No.

GI: Do you mind if I put my arms around you?

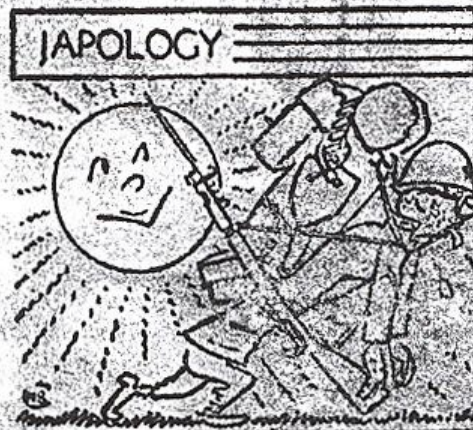
She: No.

GI: Honey, if you're really on the level about this, we're going to have a lot of fun.

\*\*\*\*\*

\*\*\*

4. Plenty "Four bells and a jingle" is an expression meaning "Full speed ahead, in a hurry"
5. No. The half deck is the partial deck immediately above the lowest complete deck. The striker went to the platform deck.
6. Aircraft carriers, escort, and seaplane tenders, small.
7. (a).
8. The navigating officer.
9. Traffic regulations adopted for the purpose of securing greater safety for life and property at sea.
10. The armament: Cruisers with guns greater than six inches are known as heavy cruisers; those with guns of six inches or less, light cruisers.



The field pack now most commonly used by the Japs is a sack about 13 inches square and 5 inches deep. A blanket or overcoat is rolled in a horse-shoe shape around the pack, a raincoat or shelter tent is attached across the top, and the whole lot is strapped to the back.